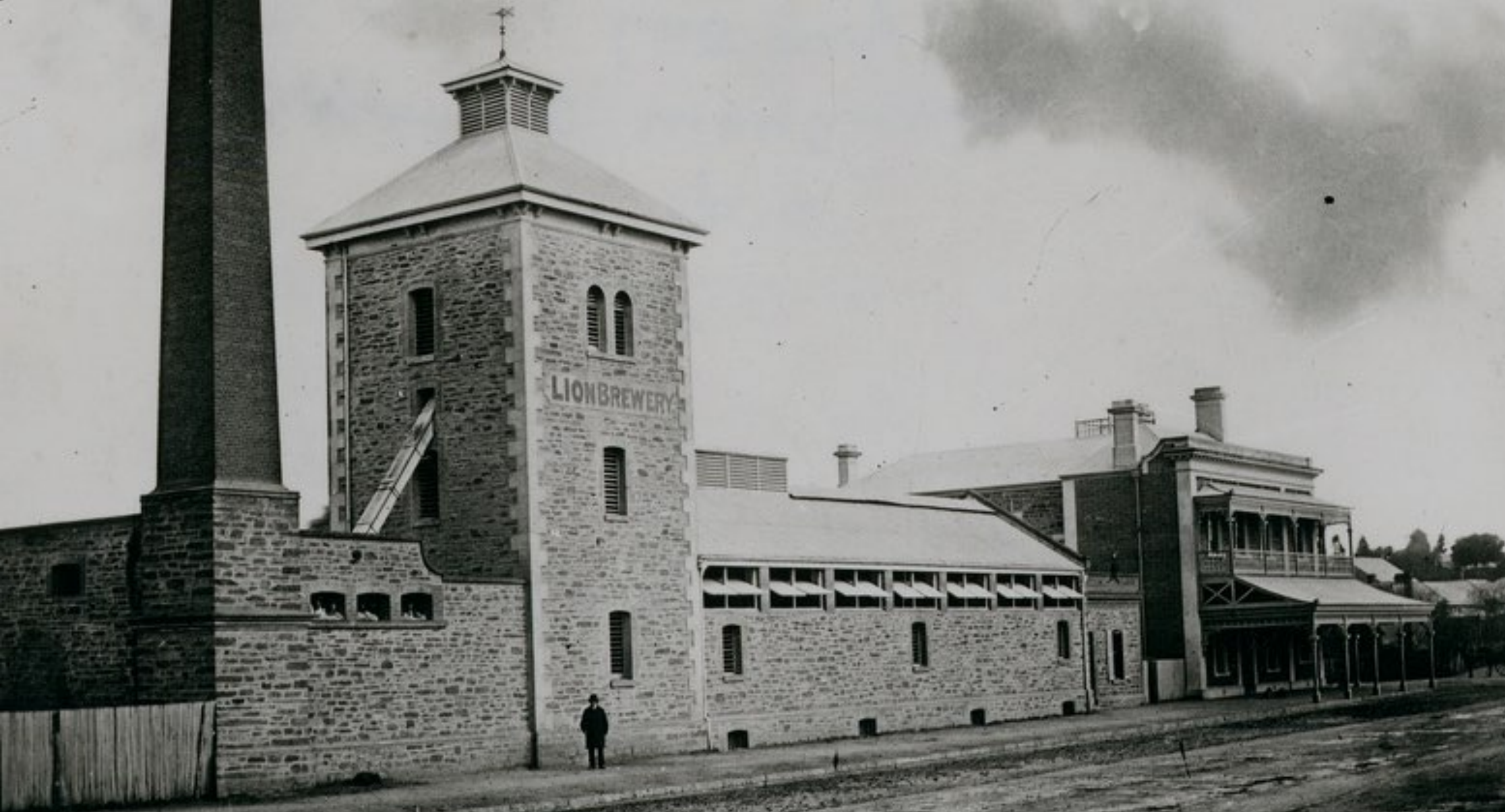


# Lion Brewery cellars





# Lion Brewery: rough chronology

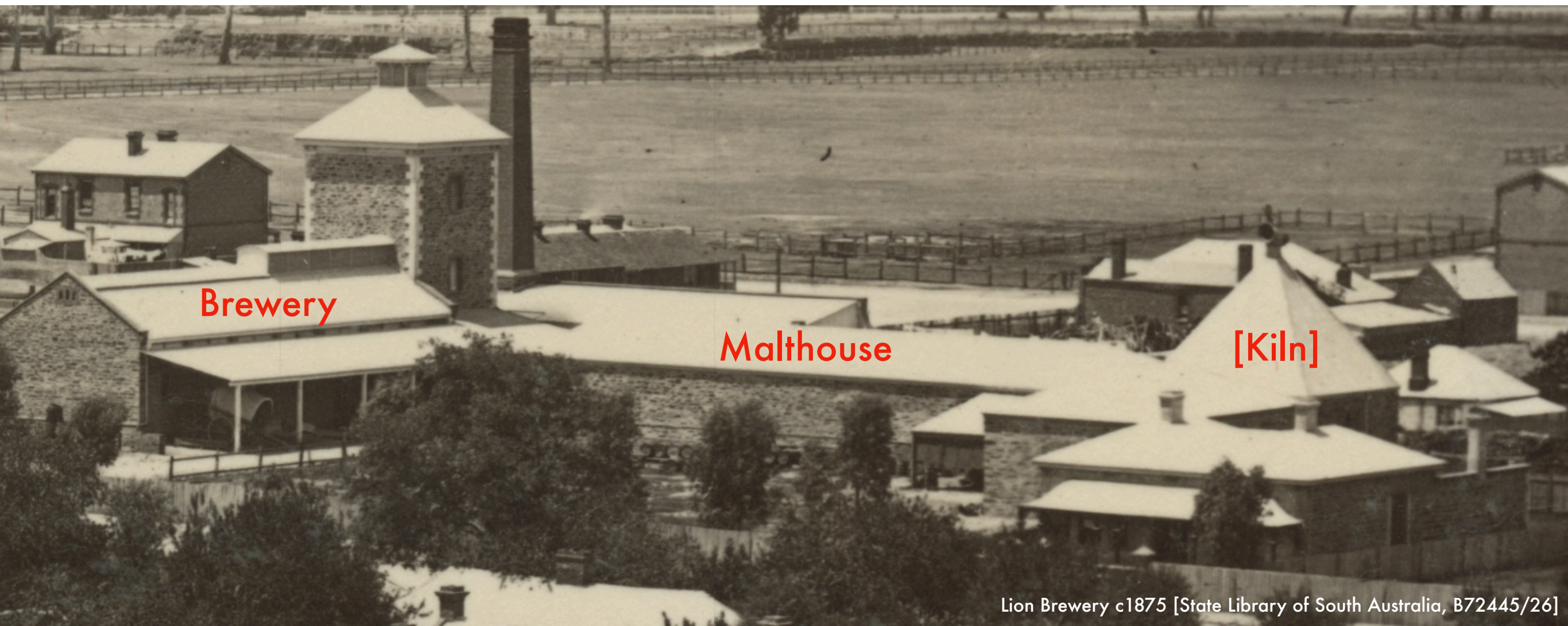
## 1871-2 Lion Brewery built (Bailey & Stanley)

1871: 35 breweries in SA; 6 in Adelaide, 6 suburban, 23 country

1914: 13 in SA

## 1873 Separate malthouse added

Brewery acquired by Beaglehole & Johnston





# Lion Brewery: rough chronology

- 1881**     **Lion Hotel built (Beaglehole & Johnston)**  
Seventeenth hotel owned by B&J; four other hotels in 1881-2
- 1882**     **Galland pneumatic malting system installed**
- 1888**     **Lion Brewing & Malting Company founded**  
South Australian Brewing Co: 1888; Walkerville Cooperative Brewing Co: 1898
- 1892**     **Barnett & Foster carbonation and bottling plant installed**
- 1893**     **Bottling plant sold/leased?**
- 1914**     **Lion Brewery ceased brewing beer**  
Maltings and aerated water/cordial factory  
Production 1913-4: Lion: 175,000g; SAB: 1,700,000g; Walkerville: 2,600,000g
- 1921-4**   **New malthouse and aerated water plant installed**
- 1970-2**   **Lion B&M Co North Adelaide properties sold  
and redeveloped ["Old Lion"]**
- 1973**     **Lion B&M Co acquired by South Australian Brewing Co**

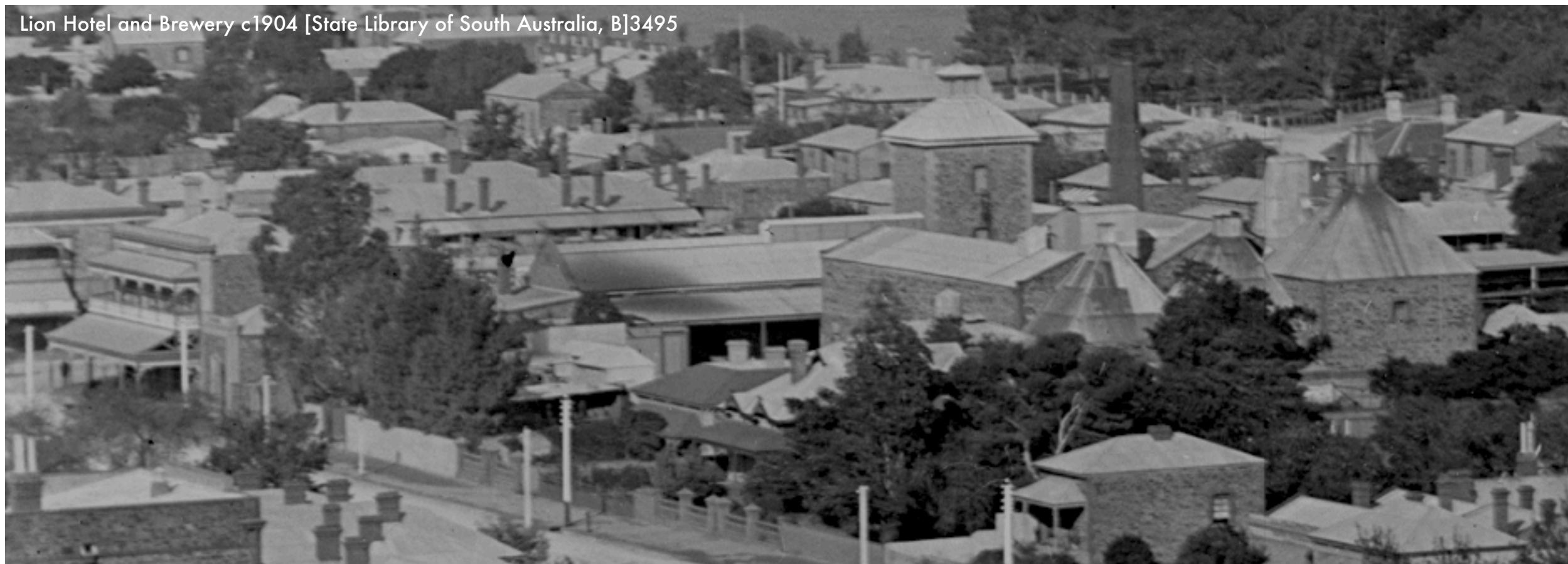


Lion Brewery Yard c1890 [State Library of South Australia, B15981]



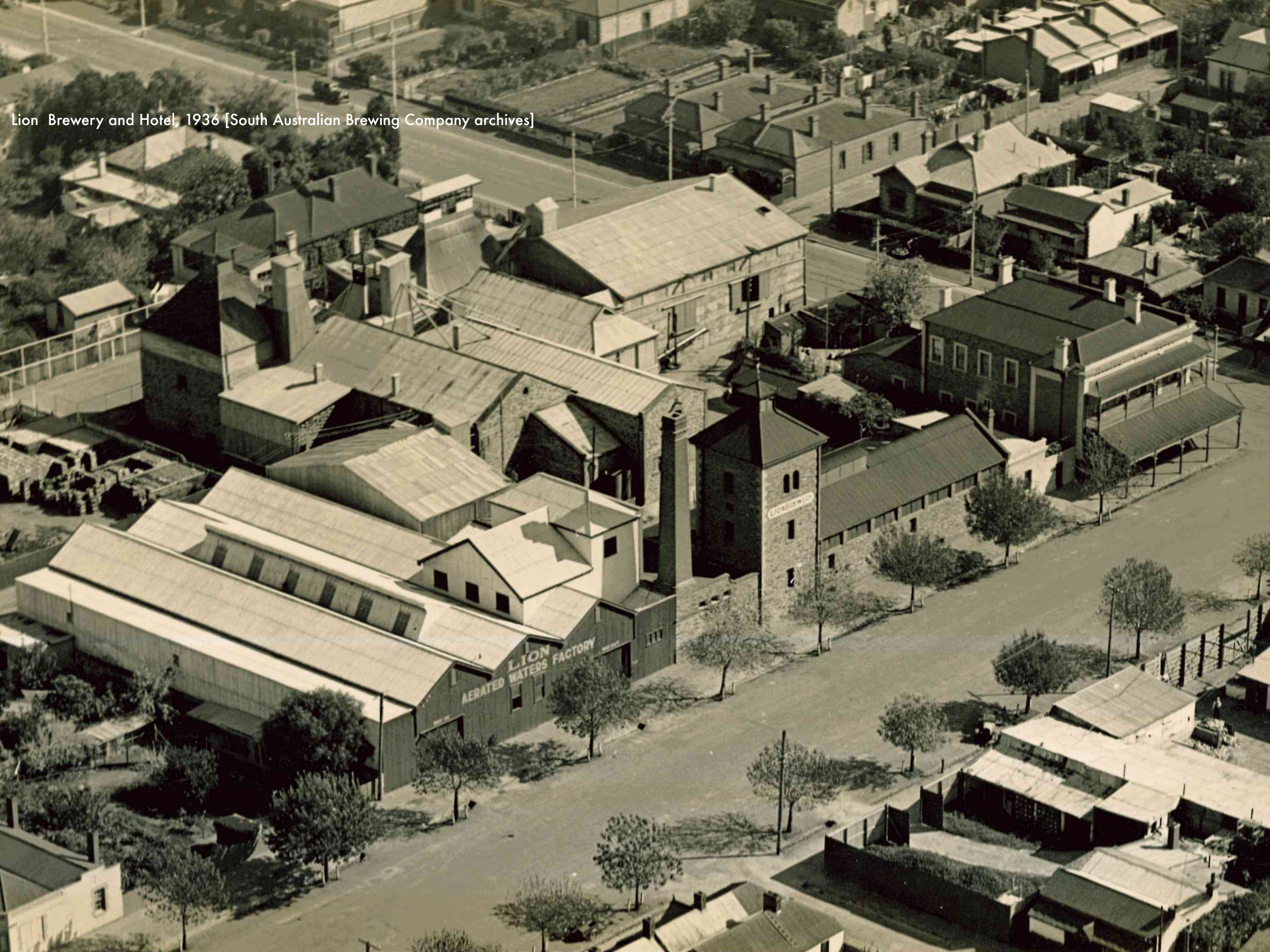


Lion Hotel and Brewery c1904 [State Library of South Australia, B]3495





Lion Brewery and Hotel, 1936 [South Australian Brewing Company archives]







Lion Brewery and Hotel, 1936 [South Australian Brewing Company archives]



# Lion Brewery: the cellars

- 1871 First cellars excavated (main brewery)
- 1873 Second cellars dug (new malting)
- 1875-6 Third cellars dug (extensions)

**TENDERS** will be received till Friday, 26th instant, for the EXCAVATION of a CELLAR at the Lion Brewery, North Adelaide. Particulars on the premises.  
d3

*Express and Telegraph, 24 September 1873, p.1*

**TENDERS** will be received up till Monday, January 11, for EXCAVATING a CELLAR at the LION BREWERY. Specifications to be seen on the premises.  
d4 **BEAGLEHOLE & JOHNSTON.**

*Express and Telegraph, 9 January 1875, p.1*

#### LION BREWERY.

A fine brewery has been erected at the lower part of North Adelaide for Messrs. Bailey & Co. on what used to be the vacant acre at the corner of Melbourne and Jerningham streets. The building has a frontage of 130 feet to the former street. The cellar is 75 feet long by 25 wide in the clear, being enclosed by thick stone walls. Above this and of the same dimensions is the malt store, the floor between the two being filled with pug so as to keep the cellar cool. The brewery proper is at the east end, having a frontage of 122 feet and reaching to a height of 60 feet. In the lower part are the engine, boiler, and appliances for brewing, and above these large vats supported on transverse timbers. Pipes extend from these to the cellar, and in every direction where they are likely to be required, the whole premises having been designed and fitted up in accordance with the latest improvements. The walls are of Glen Osmond stone with cement dressings. The chimney-stack is 70 feet high. South of the main building are stalls for eight horses, and there are also sheds for storing casks and for cooperage, suitable to the requirements of the business. The yard is pitch-paved and well drained, the whole of the premises being enclosed by a substantial fence. The architect was Mr. D. Garlick, and the builders were Messrs. Brown & Thompson.



## *LICENSED VICTUALLERS ASSOCIATION.*

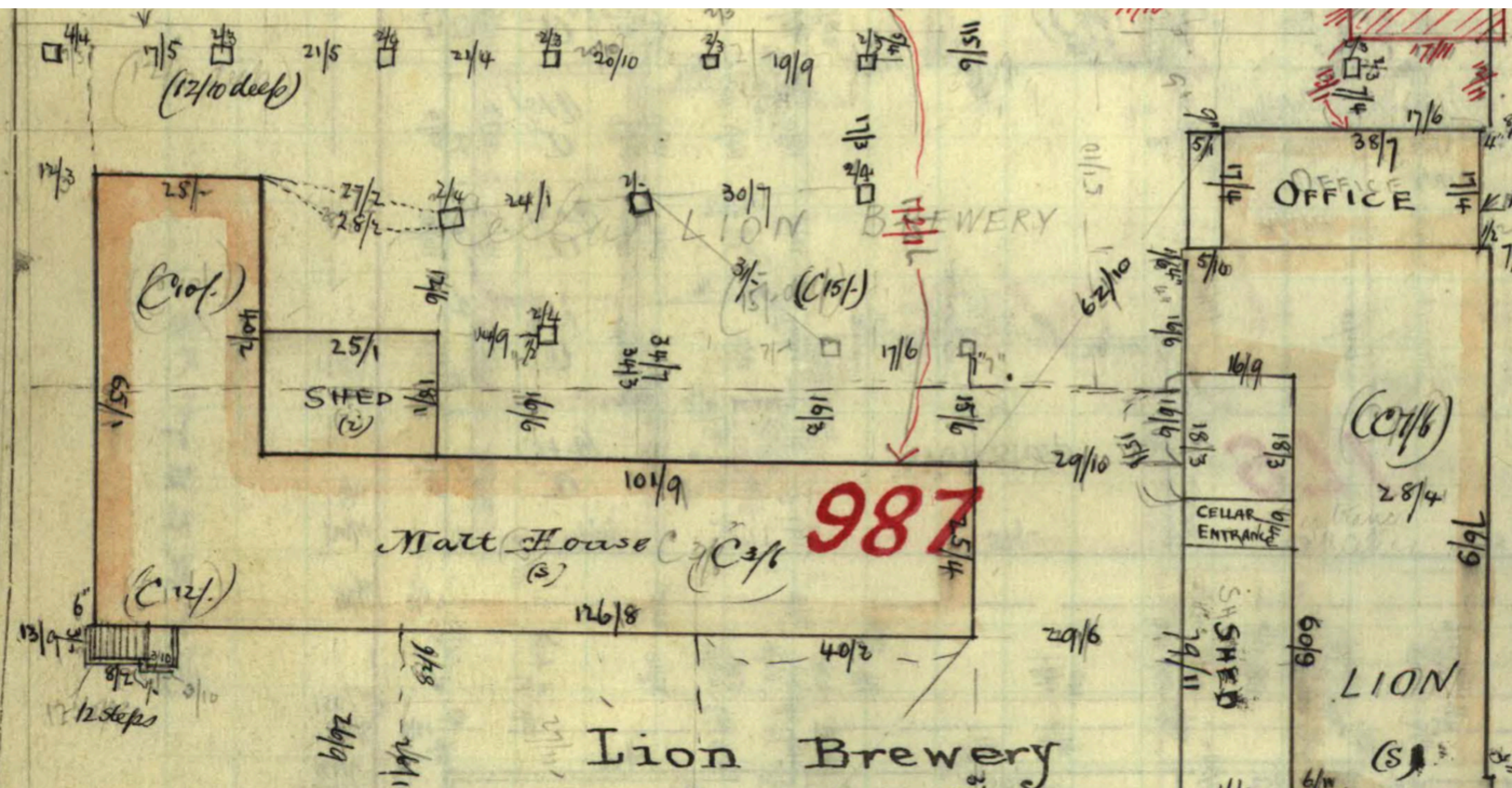
### **VISIT TO THE LION BREWERY.**

On Thursday afternoon the members of the committee of the Licensed Victuallers' Association paid an official visit to the Lion Brewing, Malting, and Wine and Spirit Company's premises at North Adelaide. ... The cellars were commodious, clean, and very cool. Everything was well arranged, and the visitors expressed admiration at the general appearance of the underground departments. In the working cellar the company are now using copper swan necked automatic pipes for cleansing purposes, and find them very serviceable. Leaving the working cellar a visit was next paid to the four cellars which are utilised for the running beers. They are each exactly an acre in length.

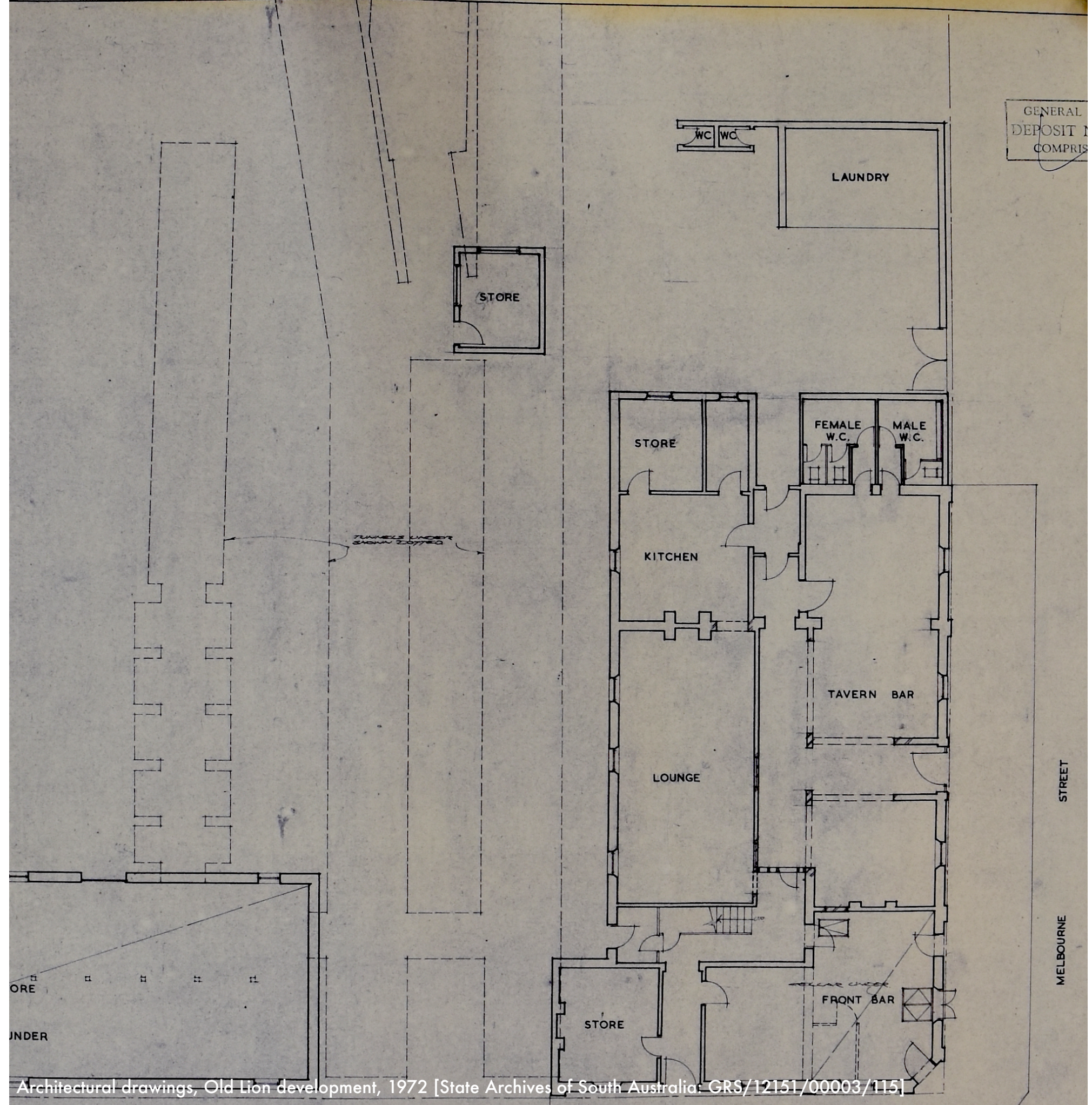
















Lion Hotel, c1930 [South Australian Brewing Company archives]

Liquid  History

With many thanks to Alison Painter